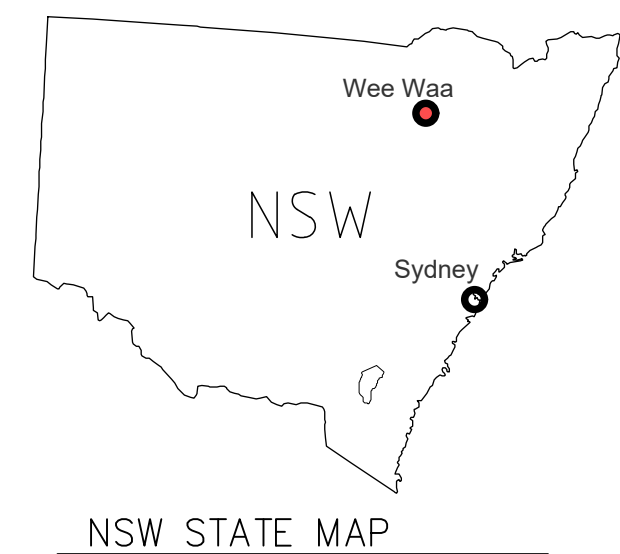




ADDRESS
LOT 191, DP757125
3843 YARRIE LAKE ROAD
WEE WAA
NSW 2388

COORDINATES
-30.252663°, 149.455721°



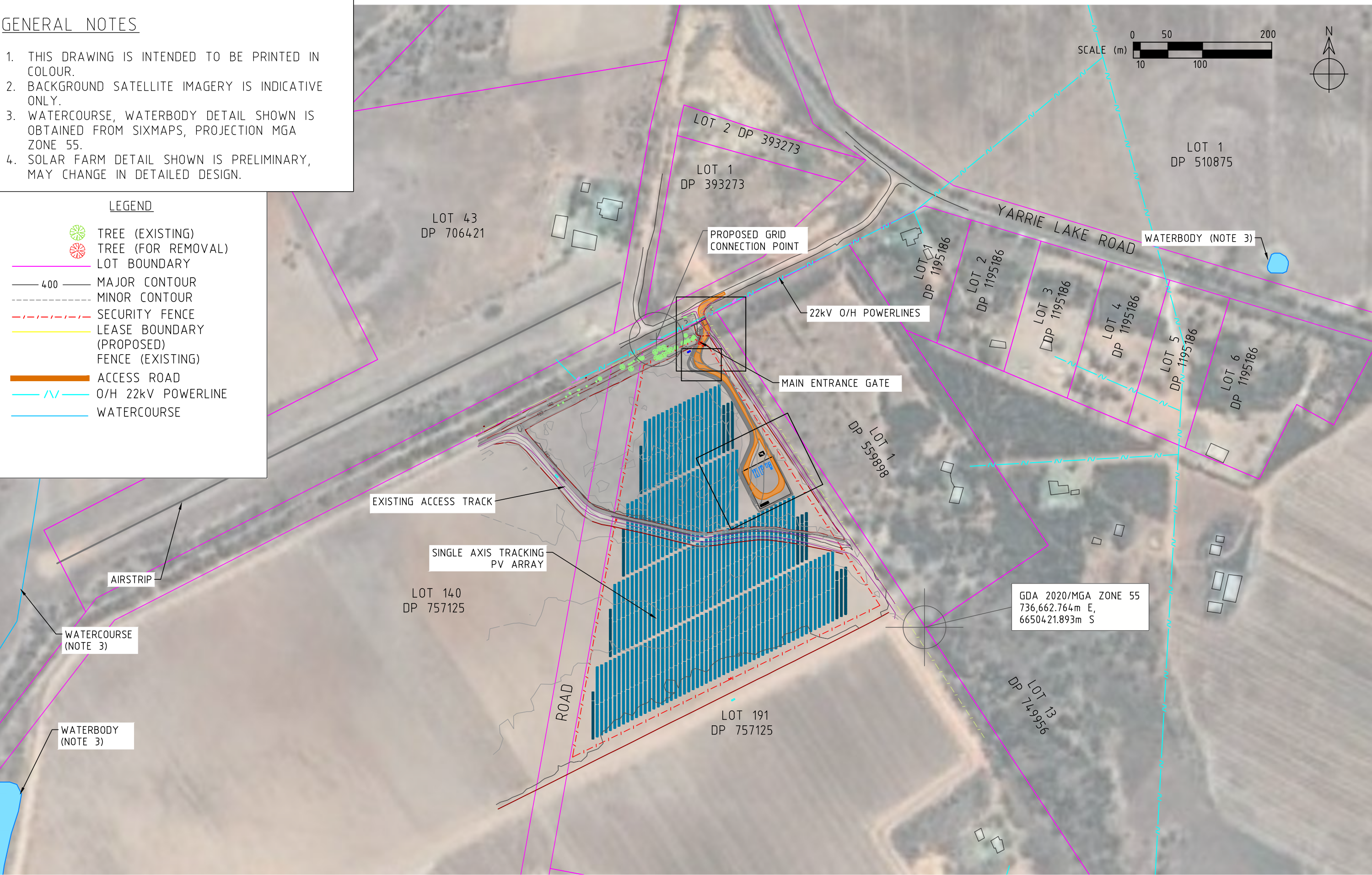
 PROVIDENCE ASSET GROUP 	REFERENCES							THIS DRAWING IS THE PROPERTY OF PROVIDENCE ASSET GROUP AND IS NOT TO BE COPIED (IN WHOLE OR IN PART) FOR ANY PURPOSE OR DISCLOSED TO OTHER PARTIES WITHOUT THE APPROVAL OF PROVIDENCE ASSET GROUP OR AN AUTHORIZED AGENT.	TITLE PROVIDENCE ASSET GROUP WEE WAA SOLAR FARM LOCATION DETAIL	SCALE AS SHOWN	
										REVISION B	
		B	2021.02.05	MINOR REVISIONS	JM	JM	SS			JM	PAPER SIZE A3
		A	2021.01.21	FIRST ISSUE	JM	JM	SS			JM	
		REV.	DATE	DESCRIPTION	DRWN.	DESIGNED	CHKD.			APPR.	

GENERAL NOTES

- 1. THIS DRAWING IS INTENDED TO BE PRINTED IN COLOUR.
- 2. BACKGROUND SATELLITE IMAGERY IS INDICATIVE ONLY.
- 3. WATERCOURSE, WATERBODY DETAIL SHOWN IS OBTAINED FROM SIXMAPS, PROJECTION MGA ZONE 55.
- 4. SOLAR FARM DETAIL SHOWN IS PRELIMINARY, MAY CHANGE IN DETAILED DESIGN.

LEGEND

- TREE (EXISTING)
- TREE (FOR REMOVAL)
- LOT BOUNDARY
- 400 MAJOR CONTOUR
- MINOR CONTOUR
- SECURITY FENCE
- LEASE BOUNDARY (PROPOSED)
- FENCE (EXISTING)
- ACCESS ROAD
- O/H 22kV POWERLINE
- WATERCOURSE



REFERENCES		REVISIONS					
B	2021.02.19	CIVIL STORMWATER DETAIL ADDED		JM	JM	SS	JM
A	2021.01.22	FIRST ISSUE		JM	JM	SS	JM
REV	DATE	DESCRIPTION		DRWN.	DESIGNED	CHKD.	APPR.

THIS DRAWING IS THE PROPERTY OF PROVIDENCE ASSET GROUP AND IS NOT TO BE COPIED (IN WHOLE OR IN PART) FOR ANY PURPOSE OR DISCLOSED TO OTHER PARTIES WITHOUT THE APPROVAL OF PROVIDENCE ASSET GROUP OR AN AUTHORIZED AGENT.

TITLE	
PROVIDENCE ASSET GROUP	
WEE WAA SOLAR FARM	
GENERAL ARRANGEMENT	
OVERVIEW	
DWG No.	10090-G-GAD-02-1

SCALE
1:5000
REVISION
B
PAPER SIZE
A3

LEGEND

- TREE (EXISTING)
- TREE (FOR REMOVAL)
- LOT BOUNDARY
- 400 MAJOR CONTOUR
- MINOR CONTOUR
- SECURITY FENCE (EXISTING)
- LEASE BOUNDARY (PROPOSED)
- PV TABLE
- O/H 22kV POWERLINE
- WATERCOURSE

SYSTEM SUMMARY

ELECTRICAL CONFIGURATION:

TOTAL PV PLANT CAPACITY (DC): 6.789 MWp
TOTAL INVERTER CAPACITY (AC): 4.95MVA
PV PLANT MAXIMUM EXPORT CAPACITY (AC): 4.95MW
DC:AC RATIO: 1.371
STRINGS OF 28 PV MODULES.
424/425 PV STRINGS PER INVERTER.
449 PV STRINGS TOTAL.

PV MODULES:

MFR: LONGI SOLAR
MODEL: LR5-72HPH-540M
NAMEPLATE: 540Wp
QUANTITY: 12,572 MODULES

INVERTERS:

MFR: SUNGROW
MODEL: SG2475HV-MV
NAMEPLATE: 2475kVA
QUANTITY: 2

MV POWER STATION:

MFR: SUNGROW
MODEL: SG4950HV-MV
QUANTITY: 1

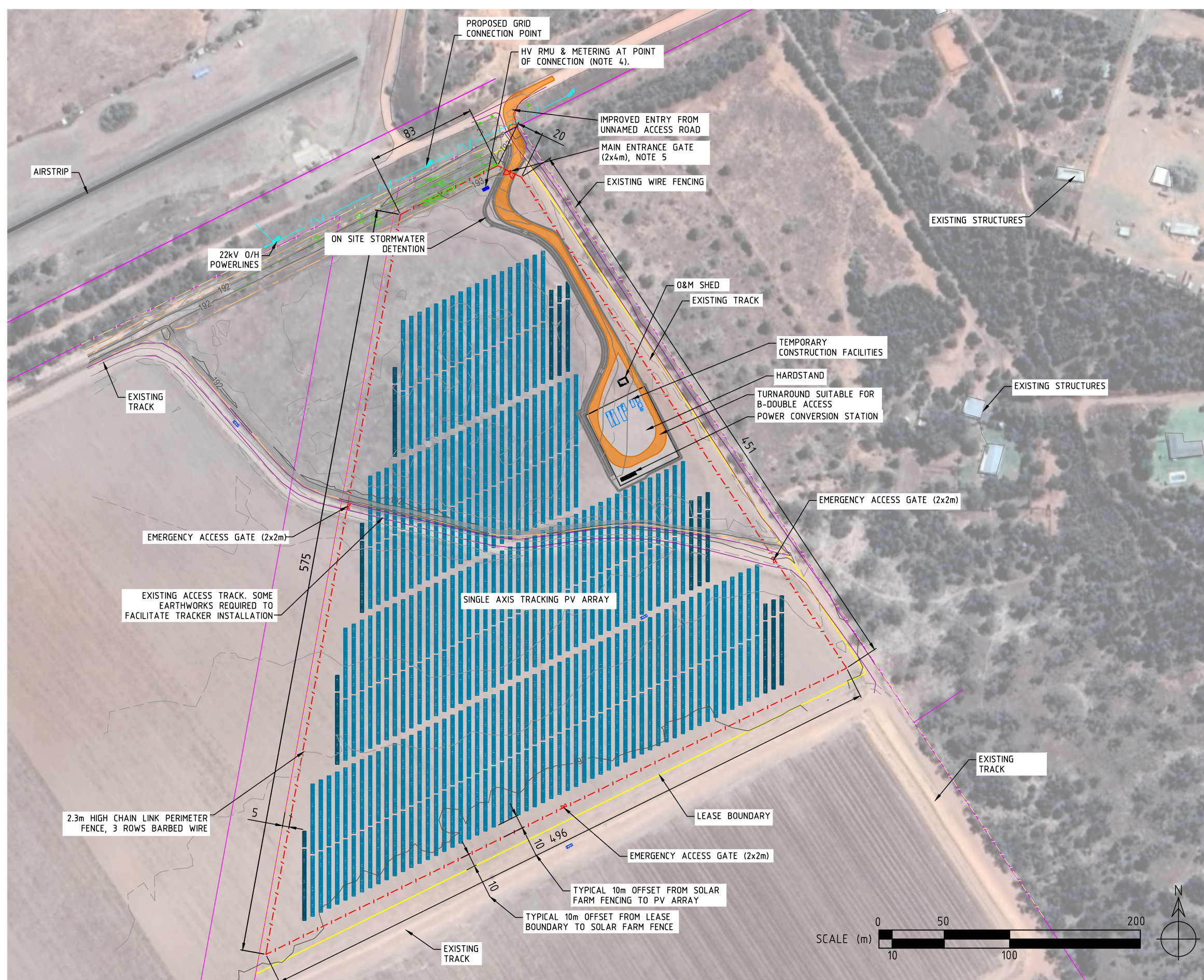
TRACKER ARRAY:

TYPE: GROUND MOUNT SINGLE AXIS TRACKING
CONFIGURATION: INDEPENDENT TYPE
RANGE OF MOTION: $\pm 60^\circ$
PITCH: 6.30m
GCR: 35.81%
QUANTITY: 154 TABLES (13 SHORT, 141 FULL)

FENCED AREA: 136,146 m²
LEASE AREA: 149,989 m²

GENERAL NOTES:

- SITE ACCESS VIA UNNAMED ROAD CONNECTING TO YARRIE LAKE ROAD.
- DETAIL SHOWN IS PRELIMINARY, MAY CHANGE IN DETAILED DESIGN.
- CLEARANCE BETWEEN SOLAR TRACKER ARRAY & SITE SECURITY FENCE TYPICALLY 10m
- HV RMU & METERING (LOCATION AND TYPE TO BE DETERMINED, IS SUBJECT TO ESSENTIAL ENERGY FEEDBACK).
- FOR SECURITY GATE DETAILS REFER TO DRAWING 10090-C-DET-02-1.
- WATERCOURSE, WATERBODY DETAIL FROM SIXMAPS, MGA ZONE 55 PROJECTION.
- REFER TO CIVIL DETAIL DRAWING 10090-C-DET-01-1.



REFERENCES

REVISIONS

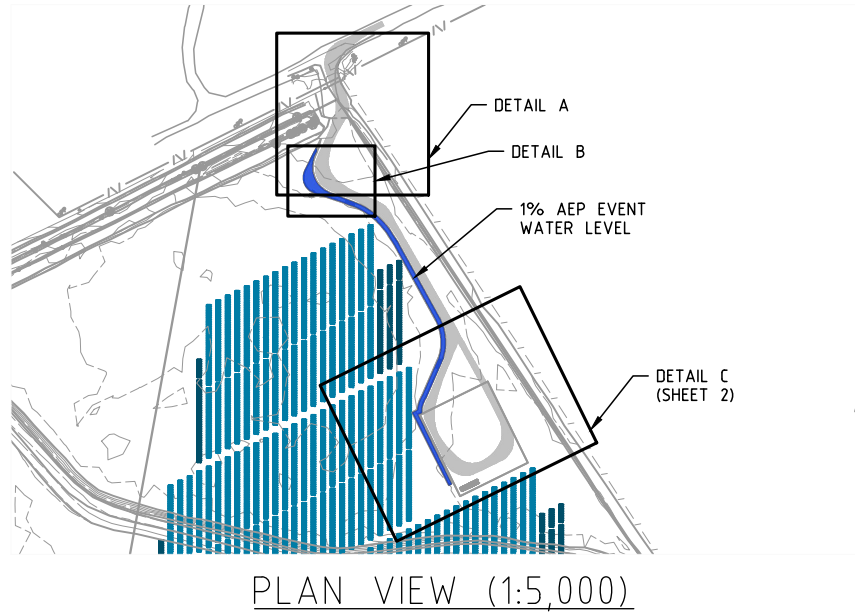
REV	DATE	DESCRIPTION	DRWN.	DESIGNED	CHKD.	APPR.
B	2021.02.19	CIVIL STORMWATER DETAIL ADDED	JM	JM	SS	JM
A	2021.01.22	FIRST ISSUE	JM	JM	SS	JM

THIS DRAWING IS THE PROPERTY OF PROVIDENCE ASSET GROUP AND IS NOT TO BE COPIED (ON WHOLE OR IN PART) FOR ANY PURPOSE OR DISCLOSED TO OTHER PARTIES WITHOUT THE APPROVAL OF PROVIDENCE ASSET GROUP OR AN AUTHORIZED AGENT.

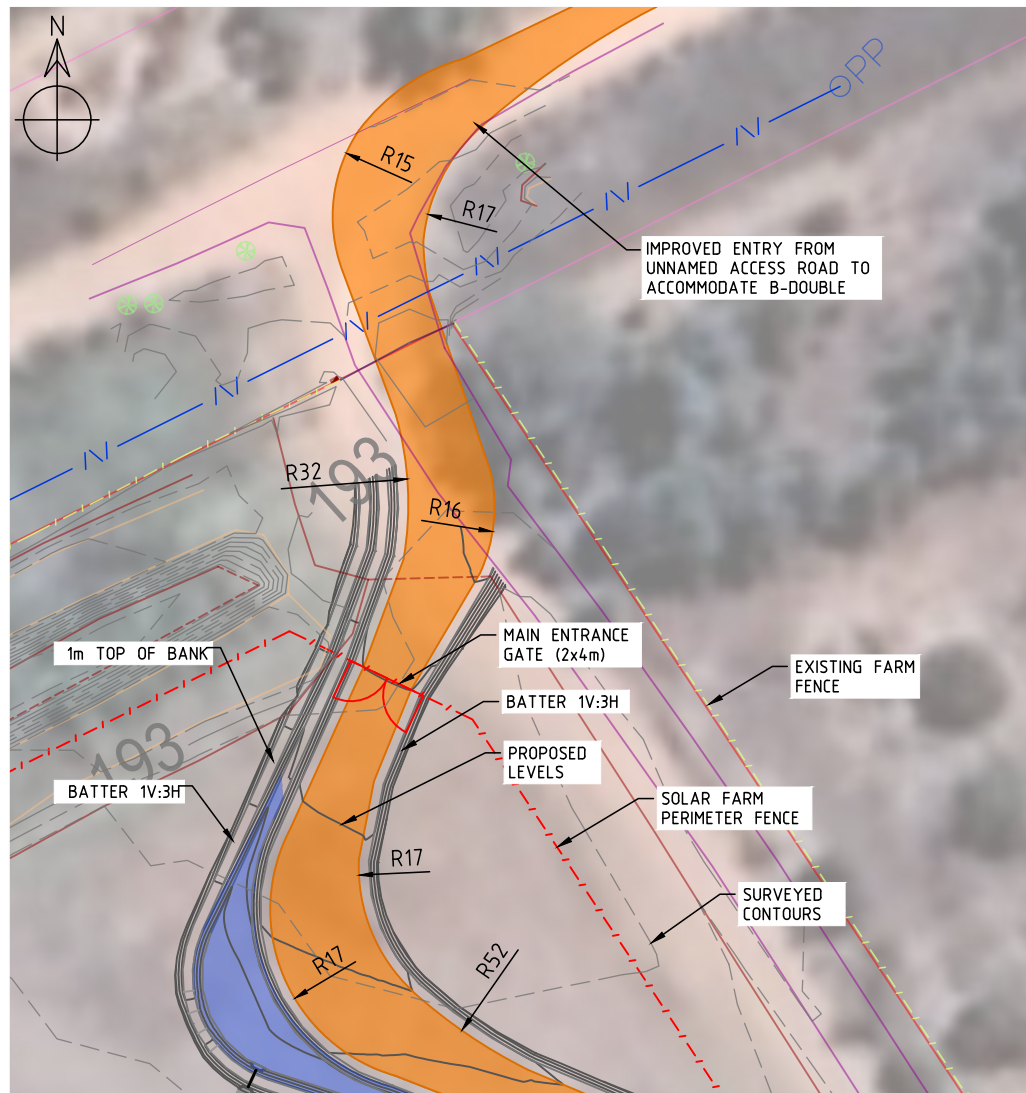
TITLE
PROVIDENCE ASSET GROUP
WEE WAA SOLAR FARM
GENERAL ARRANGEMENT
SYSTEM DETAIL
DWG No. 10090-G-GAD-02-2

SCALE
1:3000
REVISION
B
PAPER SIZE
A3

A



B

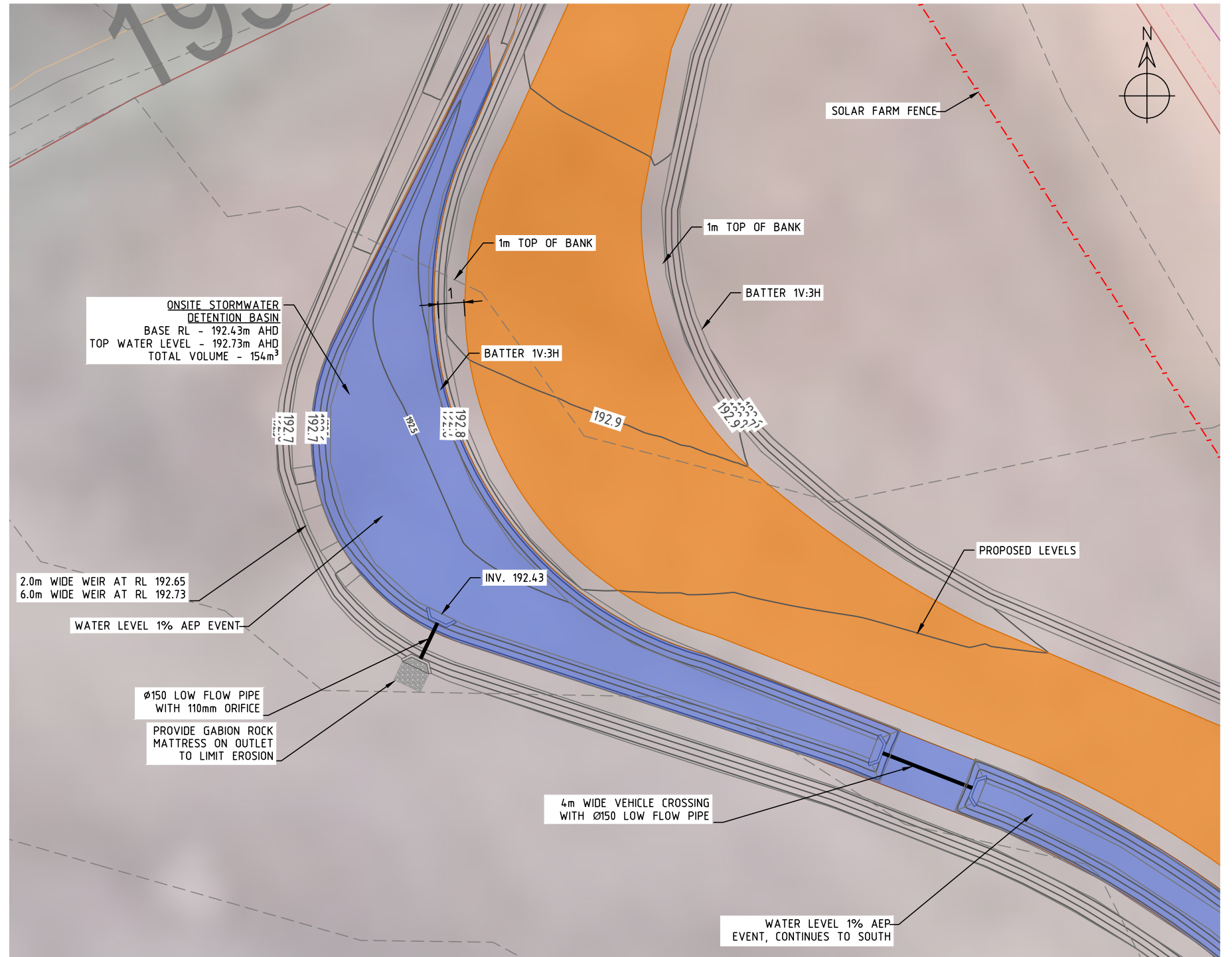


D

GENERAL NOTES

1. PRELIMINARY DETAIL SHOWN, MAY CHANGE IN DETAILED DESIGN.
2. EXISTING ACCESS TRACK TO BE UPGRADED INTO ROAD TRAFFICABLE FOR PRIME MOVER AND B-DOUBLE.
3. NEW APRONS TO BE CONSTRUCTED AT THE THE ENTRANCE UNNAMED ACCESS ROAD.
4. REFER TO 10090-C-DET-02-1 FOR PRELIMINARY ROAD SECTIONAL DETAIL.
5. REFER TO DETAIL VIEWS FOR PRELIMINARY ON SITE STORMWATER DETENTION DETAIL.

A



B

C

DETAIL A: SOLAR FARM ENTRANCE (1:750)

DETAIL B: NORTHERN ON SITE STORMWATER DETENTION (1:250)

D



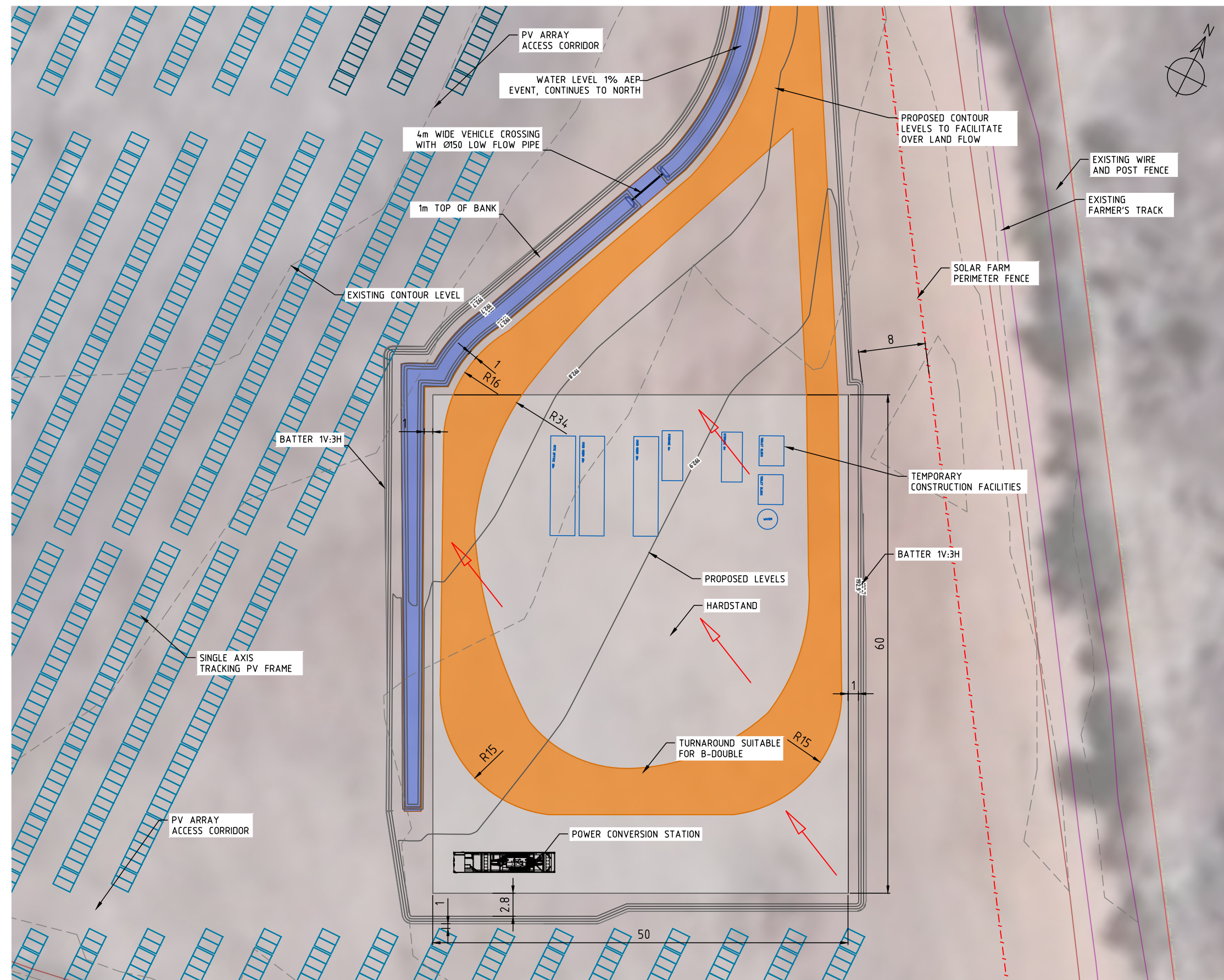
REFERENCES	
10090-C-DET-01-2	CIVIL DETAIL SHEET 2

REVISIONS		DATE	DESCRIPTION	DRWN.	DESIGNED	CHKD.	APPR.
A	2021.02.19	FIRST ISSUE		JM	JM	SS	JM

THIS DRAWING IS THE PROPERTY OF PROVIDENCE ASSET GROUP AND IS NOT TO BE COPIED (IN WHOLE OR IN PART) FOR ANY PURPOSE OR DISCLOSED TO OTHER PARTIES WITHOUT THE APPROVAL OF PROVIDENCE ASSET GROUP OR AN AUTHORIZED AGENT.

TITLE	
PROVIDENCE ASSET GROUP WEE WAA SOLAR FARM CIVIL DETAIL SHEET 1 OF 2	
DWG No.	10090-C-DET-01-1

SCALE	
AS SHOWN	
REVISION	A
PAPER SIZE	A3



GENERAL NOTES

1. SHEET 2 OF 2.
2. PRELIMINARY DETAIL SHOWN, MAY CHANGE IN DETAILED DESIGN.
3. REFER TO 10090-C-DET-02-1 FOR PRELIMINARY ROAD SECTIONAL DETAIL.

LEGEND

← DIRECTION OF SURFACE FLOW

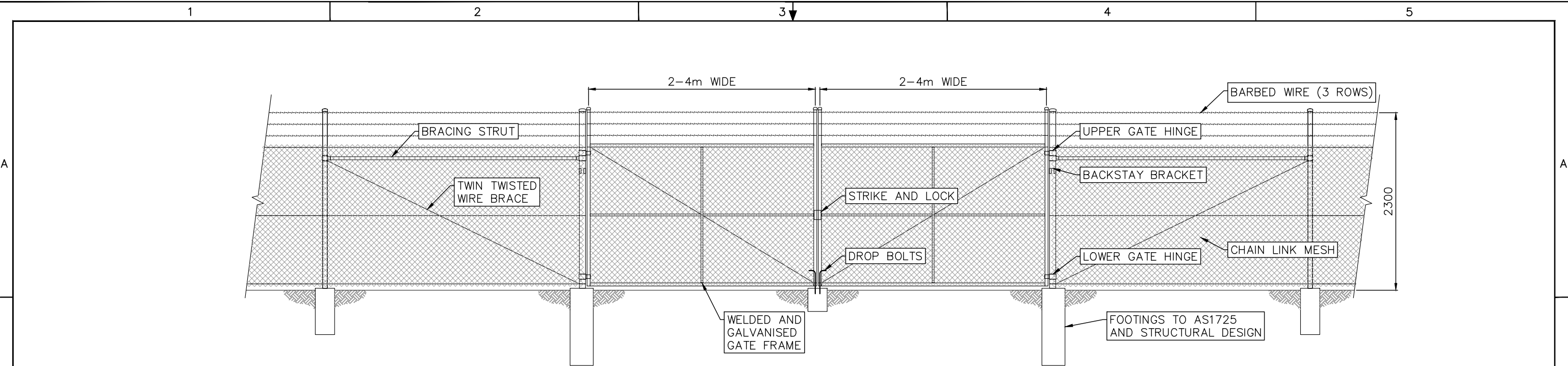
DETAIL C: ON HARDSTAND AREA (1:500)

REFERENCES		REVISIONS							
	A	2021.02.19	FIRST ISSUE		JM	JM	SS	JM	
	REV.	DATE	DESCRIPTION		DRWN.	DESIGNED	CHKD.	APPR.	
	10090-C-DFT-01-1 CIVIL DETAIL SHEET 1								

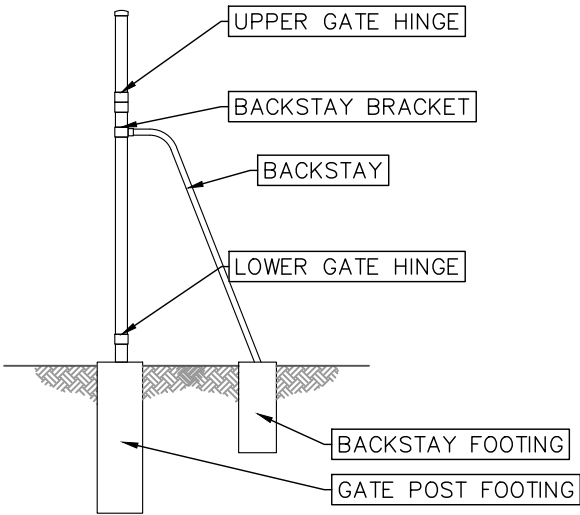
THIS DRAWING IS THE PROPERTY OF
PROVIDENCE ASSET GROUP AND IS NOT TO BE
COPIED (IN WHOLE OR IN PART) FOR ANY
PURPOSE OR DISCLOSED TO OTHER PARTIES
WITHOUT THE APPROVAL OF PROVIDENCE ASSET
GROUP OR AN AUTHORIZED AGENT.

	TITLE
	PROVIDENCE ASSET GROUP
	WEE WAA SOLAR FARM
	CIVIL DETAIL
	SHEET 2 OF 2
	DWG No. 10090-C-DET-01-2

SCALE	AS SHOWN
REVISION	A
PAPER SIZE	A3



TYPICAL FENCE & GATE ELEVATION



TYPICAL BACKSTAY ELEVATION

GENERAL NOTES

1. SOLAR FARM PERIMETER FENCE TO BE GALVANISED CHAIN LINK MESH FENCE WITH 3 ROWS BARBED WIRE.
2. NOMINAL MESH HEIGHT TO BE 1800mm.
3. NOMINAL OVERALL HEIGHT TO BE 2300mm +/- 100mm.
4. ALL FENCING COMPONENTS AND FOOTINGS TO COMPLY WITH AS 1725.
5. GATE WIDTH AS PER GA LAYOUT DRAWINGS.
6. BRACING STRUT AND WIRE BRACE REQUIRED AT ENDS, CORNERS AND GATES. DIAGONAL BRACE STRUT MAY ALSO BE USED IN LIEU OF BRACE & WIRE.
7. INTERMEDIATE BRACED PANEL CONSISTING OF TWIN TWISTED WIRE BRACE ON BOTH DIAGONALS REQUIRED AT MAX. 150m INTERVALS.
8. PERSONNEL ACCESS GATES REQUIRE BRACING STRUTS ON BOTH SIDES.
9. FOOTING DESIGN TO BE CONFIRMED DURING DETAILED DESIGN.
10. FENCE GENERALLY NOT REQUIRED TO BE EARTHED UNLESS IN CLOSE IS PROXIMITY TO ELECTRICAL COMPONENTS OR AS REQUIRED WITHIN UTILITY EASEMENTS OR SIMILAR. TO BE DETERMINED DURING DETAILED DESIGN.

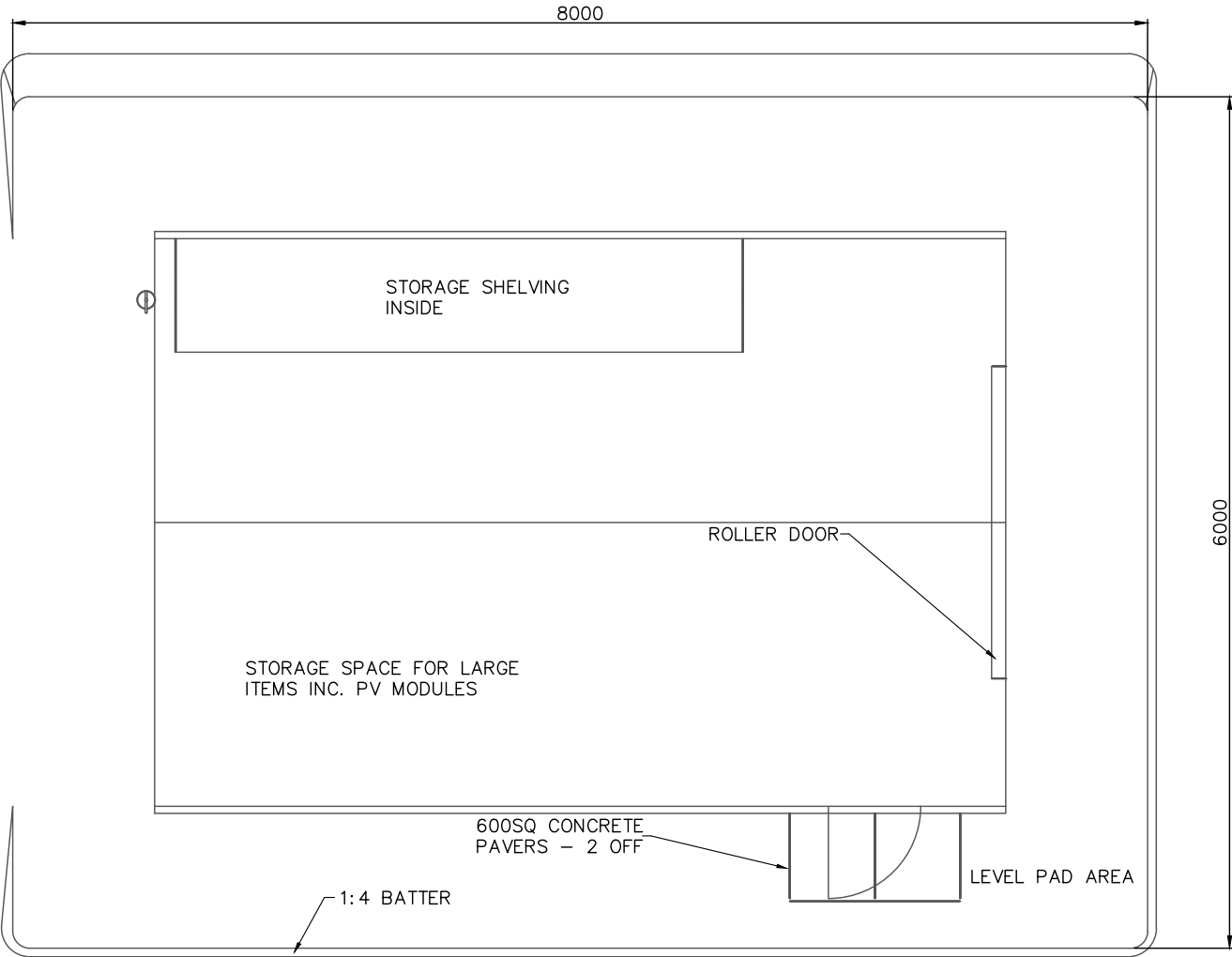
REV. DATE		DESCRIPTION		DRWN.	DESIGNED	CHKD.	APPR.
A	04.01.2021	FIRST ISSUE		JM	JM	SS	JM

THIS DRAWING IS THE PROPERTY OF PROVIDENCE ASSET GROUP AND IS NOT TO BE COPIED (IN WHOLE OR IN PART) FOR ANY PURPOSE OR DISCLOSED TO OTHER PARTIES WITHOUT THE APPROVAL OF PROVIDENCE ASSET GROUP OR AN AUTHORIZED AGENT.

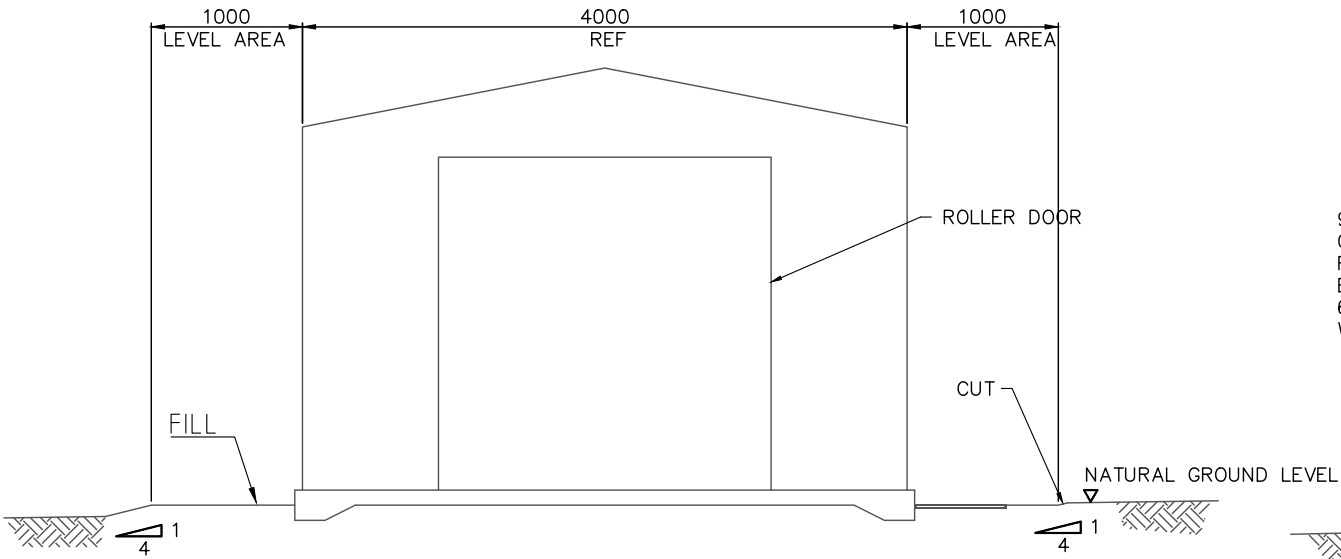
TITLE		SCALE
PROVIDENCE ASSET GROUP		DNS
WEE WAA SOLAR FARM		REVISION
SECURITY FENCE DETAIL		A
TYPICAL		PAPER SIZE
DWG No. 10090-C-DET-02-1		A3

GENERAL NOTES:

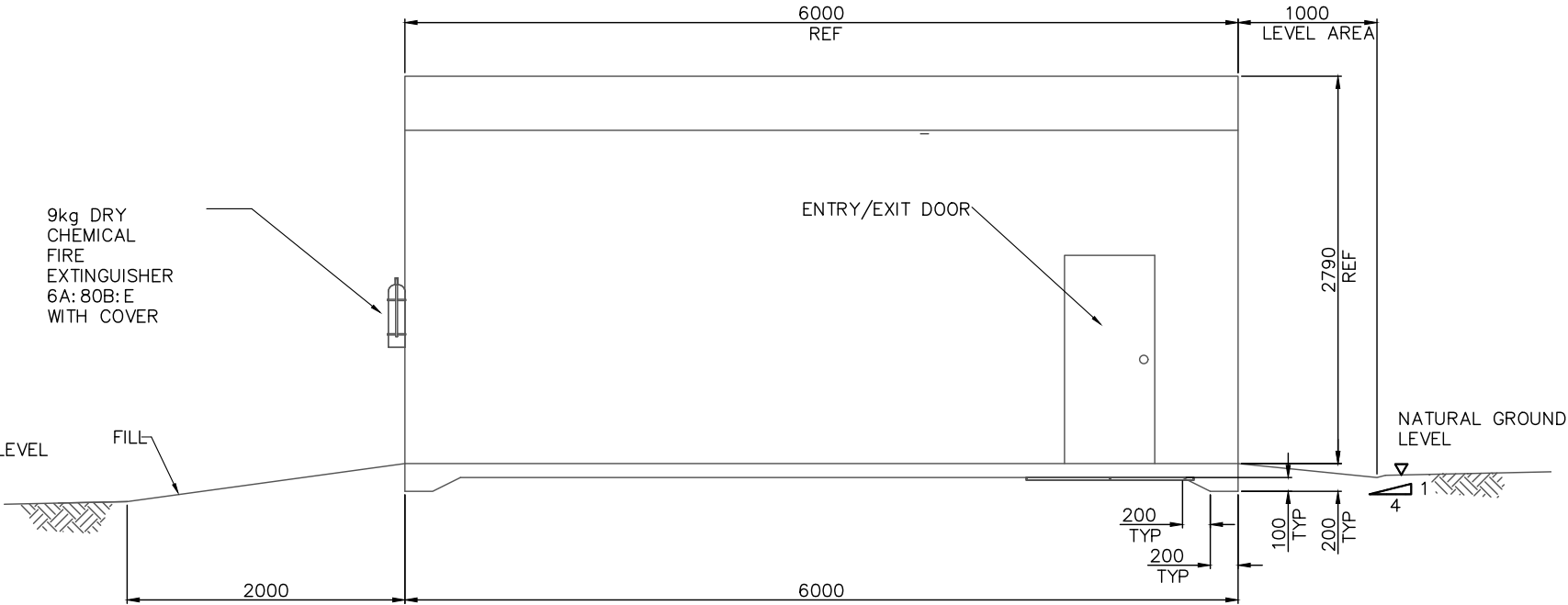
1. DIMENSIONS ARE SHOWN IN MILLIMETERS (mm)
2. SHED DESIGNED AND SUPPLIED BY (TBC).
3. WIND REGION A1, IMPORTANCE LEVEL 2
4. COMPLIES WITH PART B1 OF BUILDING CODE OF AUSTRALIA



PLAN



SIDE ELEVATION



ELEVATION



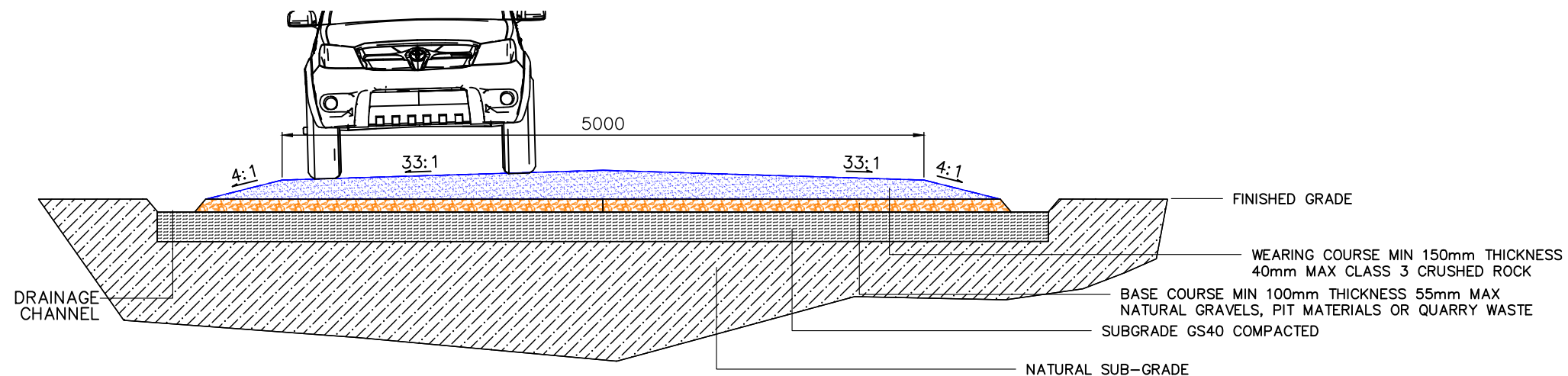
REFERENCES		REVISIONS		APPROVALS			
A	04.01.2021	FIRST ISSUE	JM	JM	SS	JM	
REV.	DATE	DESCRIPTION	DRWN.	DESIGNED	CHKD.	APPR.	

THIS DRAWING IS THE PROPERTY OF PROVIDENCE ASSET GROUP AND IS NOT TO BE COPIED (IN WHOLE OR IN PART) FOR ANY PURPOSE OR DISCLOSED TO OTHER PARTIES WITHOUT THE APPROVAL OF PROVIDENCE ASSET GROUP OR AN AUTHORIZED AGENT.

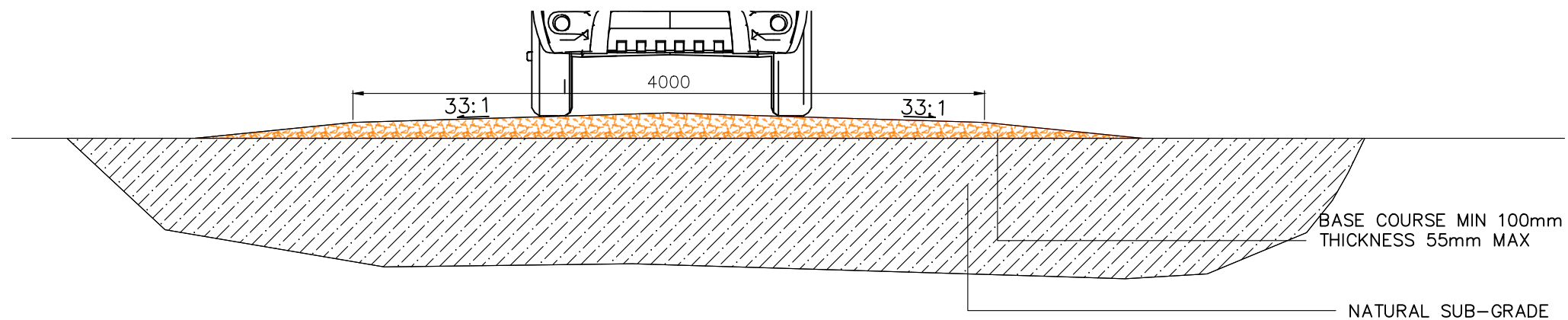
TITLE		SCALE	
PROVIDENCE ASSET GROUP		AS SHOWN	
WEE WAA SOLAR FARM		REVISION	
SHED DETAIL		A	
TYPICAL		PAPER SIZE	
DWG No. 10090-C-DET-05-1		A3	

GENERAL NOTES

1. DETAILS SHOWN ARE PRELIMINARY, PAVEMENT DESIGN SUBJECT TO FINAL TRAFFICABILITY ASSESSMENT.
2. TRAFFIC LANE TYPICAL WIDTHS OF 4m TO 5m AS SHOWN. SECTIONS MAY BE WIDER THAN SHOWN TO ACCOMMODATE REQUIRED VEHICLE TURNING CIRCLES.
3. ALL ROADS TO HAVE ADEQUATE CROSS FALL FROM CENTER AND SHALL MAINTAIN MINIMUM LAYER THICKNESSES PER THE PAVEMENT DESIGNS.
4. ACCESS ROAD SHALL BE RAISED MINIMUM 150mm ABOVE EXISTING GROUND LEVEL.



1 SITE ACCESS ROAD SECTION



2 PV ARRAY ACCESS ROAD SECTION



REV.	DATE	DESCRIPTION	DRWN.	DESIGNED	CHKD.	APPR.
A	04.01.2021	FIRST ISSUE	JM	JM	SS	JM
10090-C-DET-01-1 CIVIL DETAIL						

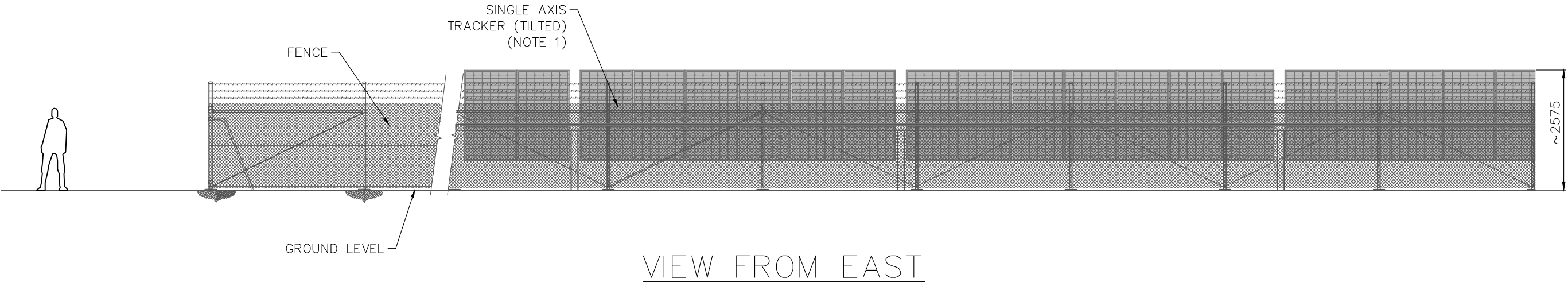
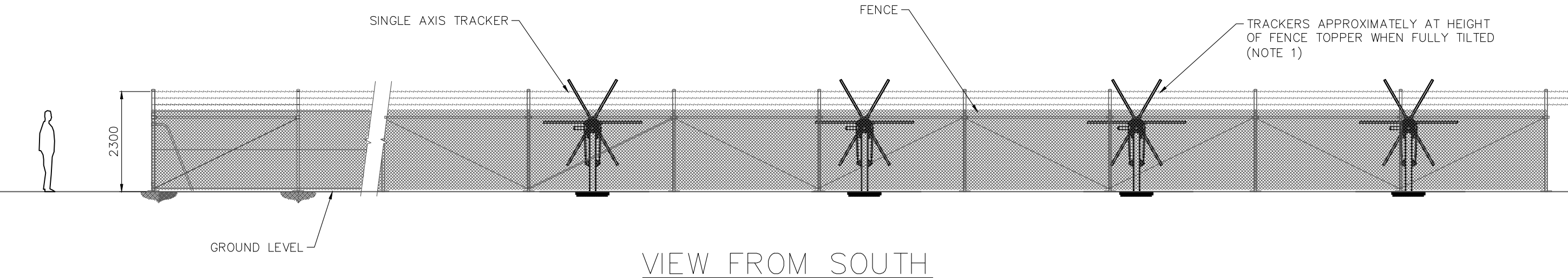
THIS DRAWING IS THE PROPERTY OF PROVIDENCE ASSET GROUP AND IS NOT TO BE COPIED (IN WHOLE OR IN PART) FOR ANY PURPOSE OR DISCLOSED TO OTHER PARTIES WITHOUT THE APPROVAL OF PROVIDENCE ASSET GROUP OR AN AUTHORIZED AGENT.

TITLE
PROVIDENCE ASSET GROUP
WEE WAA SOLAR FARM
ROAD SECTION DETAIL
TYPICAL
DWG No. 10090-C-DET-06-1

SCALE
AS SHOWN
REVISION
A
PAPER SIZE
A3

GENERAL NOTES

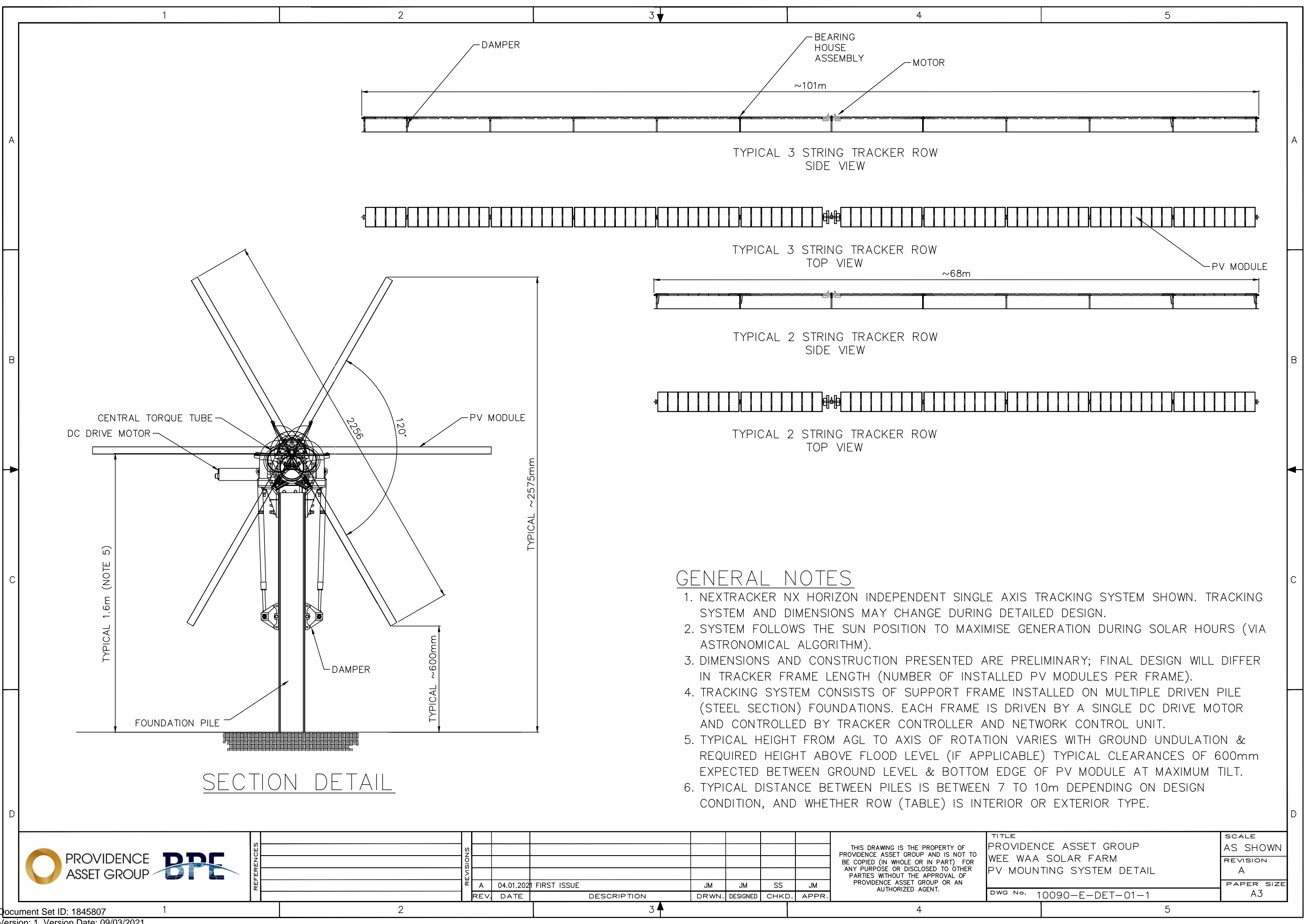
- 1. NB DETAIL PRESENTED IS PARALLEL PROJECTION. PV TRACKERS WILL BE 1-MODULE-IN PORTRAIT SINGLE AXIS TRACKING TYPE, AND WILL BE POSITIONED SUFFICIENTLY FAR FROM THE FENCELINE AS TO APPEAR SMALLER THAN AS SHOWN.
- 2. PRELIMINARY EQUIPMENT SELECTION:
PV MODULE: LONGI LR5-72HPH-540M
TRACKING SYSTEM: NEXTRACKER NX HORIZON
DETAIL PRESENTED IS BASED UPON EQUIPMENT SELECTION, MAY CHANGE DURING DETAILED DESIGN.
- 3. GROUND LEVEL SIMPLIFIED TO CONSTANT ELEVATION, GROUND LEVEL VARIES ACROSS SITE.
- 4. REFER TO 10090-C-DET-02-1 FOR FENCING DETAIL.
- 5. LANDSCAPING EXTERNAL TO FENCE NOT SHOWN.



REFERENCES		REVISIONS					
A	04.01.2021	FIRST ISSUE	JM	JM	SS	JM	
REV.	DATE	DESCRIPTION	DRWN.	DESIGNED	CHKD.	APPR.	

THIS DRAWING IS THE PROPERTY OF PROVIDENCE ASSET GROUP AND IS NOT TO BE COPIED (IN WHOLE OR IN PART) FOR ANY PURPOSE OR DISCLOSED TO OTHER PARTIES WITHOUT THE APPROVAL OF PROVIDENCE ASSET GROUP OR AN AUTHORIZED AGENT.

TITLE PROVIDENCE ASSET GROUP WEE WAA SOLAR FARM SITE ELEVATION DETAIL	SCALE DNS
	REVISION A
	PAPER SIZE A3
DWG No. 10090-G-DET-01-1	



GENERAL NOTES

- 1. NEXTRACKER NX HORIZON INDEPENDENT SINGLE AXIS TRACKING SYSTEM SHOWN. TRACKING SYSTEM AND DIMENSIONS MAY CHANGE DURING DETAILED DESIGN.
- 2. SYSTEM FOLLOWS THE SUN POSITION TO MAXIMISE GENERATION DURING SOLAR HOURS (VIA ASTRONOMICAL ALGORITHM).
- 3. DIMENSIONS AND CONSTRUCTION PRESENTED ARE PRELIMINARY; FINAL DESIGN WILL DIFFER IN TRACKER FRAME LENGTH (NUMBER OF INSTALLED PV MODULES PER FRAME).
- 4. TRACKING SYSTEM CONSISTS OF SUPPORT FRAME INSTALLED ON MULTIPLE DRIVEN PILE (STEEL SECTION) FOUNDATIONS. EACH FRAME IS DRIVEN BY A SINGLE DC DRIVE MOTOR AND CONTROLLED BY TRACKER CONTROLLER AND NETWORK CONTROL UNIT.
- 5. TYPICAL HEIGHT FROM AGL TO AXIS OF ROTATION VARIES WITH GROUND UNDULATION & REQUIRED HEIGHT ABOVE FLOOD LEVEL (IF APPLICABLE) TYPICAL CLEARANCES OF 600mm EXPECTED BETWEEN GROUND LEVEL & BOTTOM EDGE OF PV MODULE AT MAXIMUM TILT.
- 6. TYPICAL DISTANCE BETWEEN PILES IS BETWEEN 7 TO 10m DEPENDING ON DESIGN CONDITION, AND WHETHER ROW (TABLE) IS INTERIOR OR EXTERIOR TYPE.



REFERENCES	REVISIONS								
		A	04.01.2021	FIRST ISSUE	JM	JM	SS	JM	
		REV.	DATE	DESCRIPTION	DRWN.	DESIGNED	CHKD.	APPR.	

A

B

C

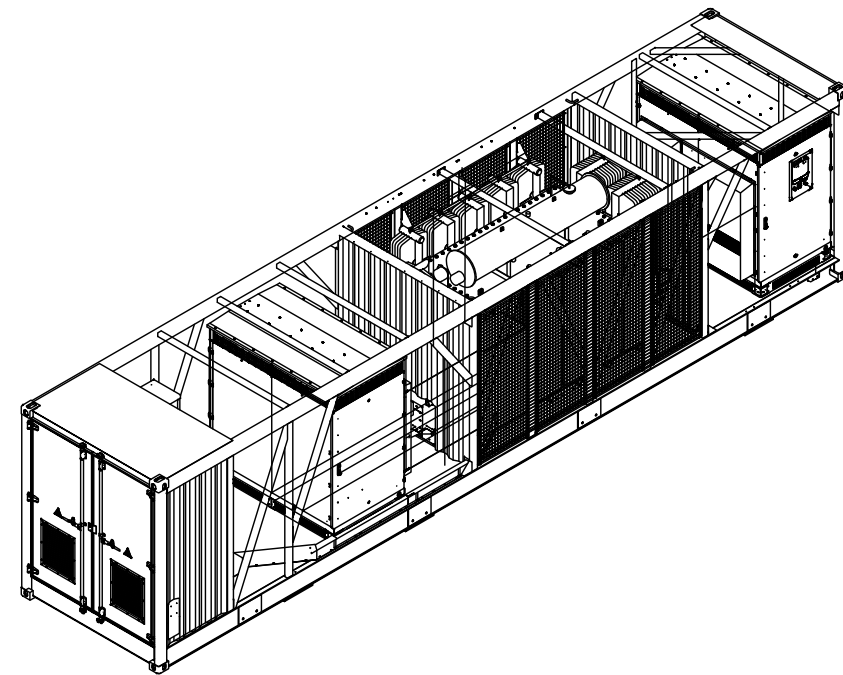
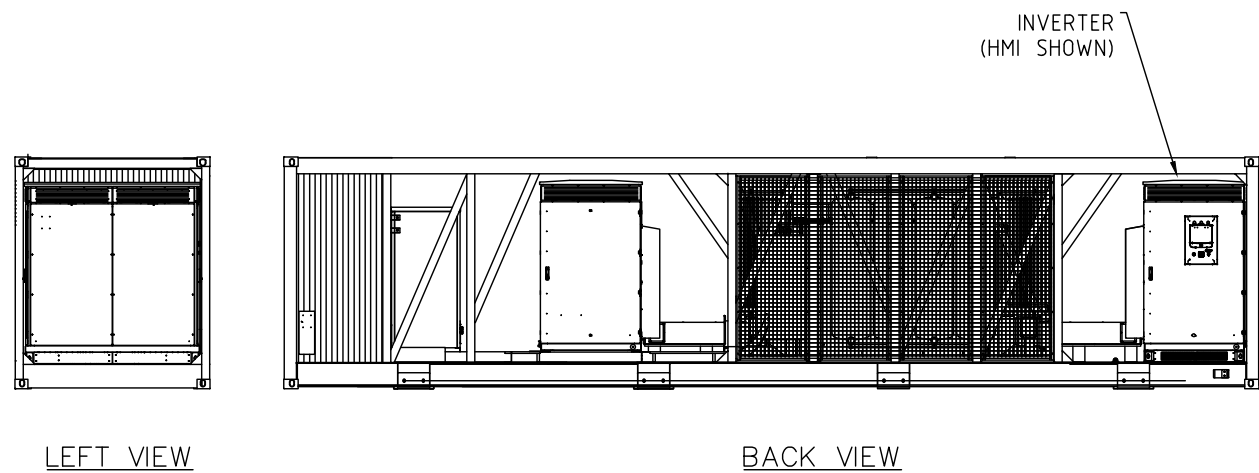
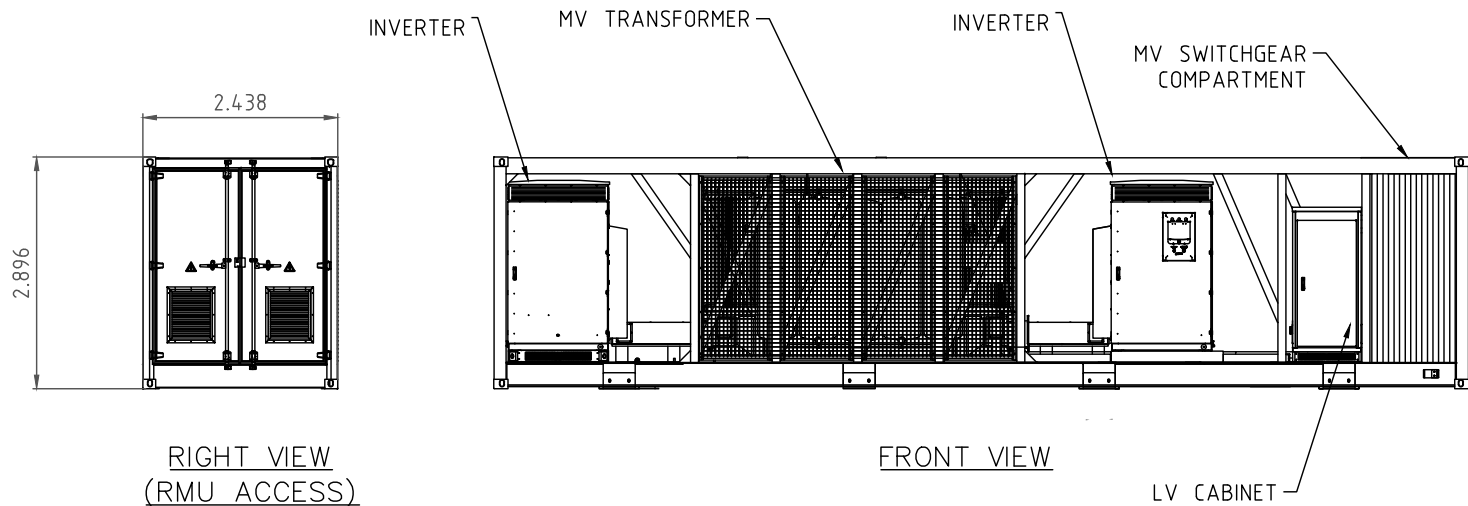
D

A

B

C

D



ISOMETRIC VIEW (OPEN)

GENERAL NOTES

1. POWER CONVERSION STATION (PCS) CONSISTS OF CENTRAL PV INVERTERS, MV TRANSFORMER, MV SWITCHGEAR AND AUXILIARY PLANT. PCS IS CONTAINERISED AND RAISED ABOVE GROUND LEVEL ON CONCRETE OR DRIVEN STEEL PILE FOOTINGS.
2. TYPICAL PILE FOOTINGS WITH SURROUND OF COMPACTED EARTH WITH ~100MM BLUE METAL TOP LAYER.
3. PCU SHOWN IS THE SUNGROW SG4950HV-MV MEDIUM VOLTAGE POWER STATION SYSTEM. THE PCS MAKE AND MANUFACTURER MAY BE SUBJECT TO CHANGE.



REFERENCES

REVISIONS

REV	DATE	DESCRIPTION	DRWN.	DESIGNED	CHKD.	APPR.
A	04.01.2021	FIRST ISSUE	JM	JM	SS	JM

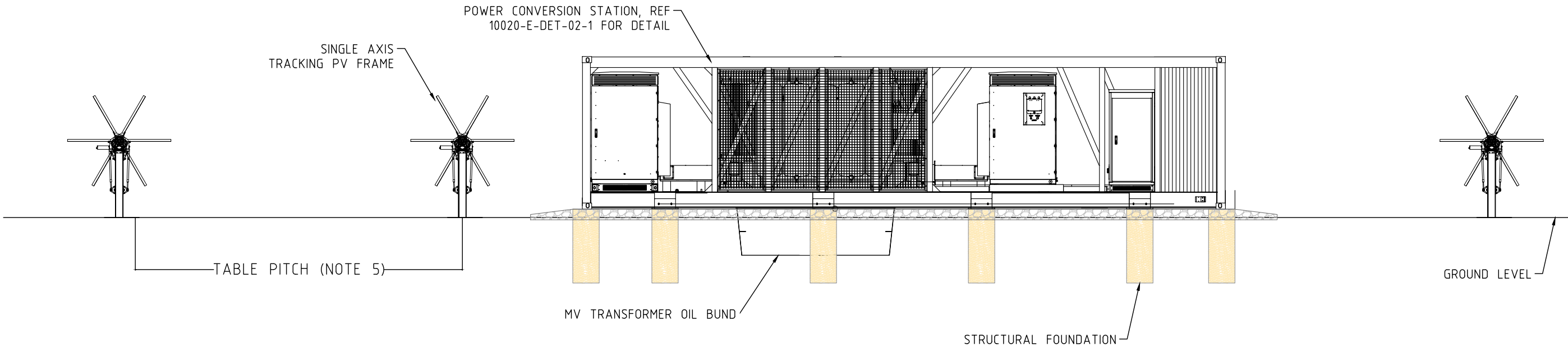
THIS DRAWING IS THE PROPERTY OF PROVIDENCE ASSET GROUP AND IS NOT TO BE COPIED (IN WHOLE OR IN PART) FOR ANY PURPOSE OR DISCLOSED TO OTHER PARTIES WITHOUT THE APPROVAL OF PROVIDENCE ASSET GROUP OR AN AUTHORIZED AGENT.

TITLE
PROVIDENCE ASSET GROUP
WEE WAA SOLAR FARM
POWER CONVERSION STATION DETAIL
SHEET 1
DWG No. 10090-E-DET-02-1

SCALE
DNS
REVISION
A
PAPER SIZE
A3

GENERAL NOTES

- 1. TYPICAL INSTALLATION DETAIL SHOWN, MAY CHANGE DURING DETAILED DESIGN.
- 2. TYPICAL INSTALLATION SHOWN; PCS RAISED ABOVE GROUND LEVEL ON CONCRETE/STRUCTURAL PILE FOUNDATIONS, WITH BLUE METAL SURROUND. FOR LOW LYING AREAS SKID REQUIRES RAISING ABOVE FLOOD LEVEL BY COMPACTED EARTH MOUND. TYPICAL 1:3 BATTER, WITH ONE SIDE MIN 1:6 FOR PEDESTRIAN ACCESS, SUBJECT TO FINAL DESIGN.
- 3. SINGLE AXIS TRACKER ASSEMBLY – FULL HEIGHT TYPICALLY 2.575m AGL, +/- 0.5m DEPENDING ON GROUND TOPOGRAPHY. TYPICALLY 1.6m AGL, +/- 0.5m WHEN IN FLAT POSITION.
- 4. MINIMUM CLEARANCE OF 600MM BETWEEN GROUND LEVEL AND PV MODULE EDGE AT MAXIMUM ROTATION TO BE MAINTAINED.
- 5. SINGLE AXIS TRACKING FRAME – TYPICAL TABLE PITCH OF 6.0 – 7.0m
- 6. COMBINER BOX TYPICALLY 1.5m +/- 0.5m HIGH.



REV	DATE	DESCRIPTION	DRWN.	DESIGNED	CHKD.	APPR.
A	04.01.2021	FIRST ISSUE	JM	JM	SS	JM

THIS DRAWING IS THE PROPERTY OF PROVIDENCE ASSET GROUP AND IS NOT TO BE COPIED (IN WHOLE OR IN PART) FOR ANY PURPOSE OR DISCLOSED TO OTHER PARTIES WITHOUT THE APPROVAL OF PROVIDENCE ASSET GROUP OR AN AUTHORIZED AGENT.

TITLE	PROVIDENCE ASSET GROUP WEE WAA SOLAR FARM POWER CONVERSION STATION DETAIL SHEET 2
DWG No.	10090-E-DET-02-2

SCALE	DNS
REVISION	A
PAPER SIZE	A3